

## Tenaya Health and Professional Building

2701 N. Tenaya Way  
Las Vegas, NV 89128

### PROPERTY DETAILS

Rent:  
\$1.25 PSF/NNN

Operating expenses:  
\$0.40 PSF per month

Tenant Improvements:  
Negotiable

Second generation medical and  
general office space ready for  
immediate occupancy.



# CORNERSTONE

COMMERCIAL REAL ESTATE SERVICES

**Bruce S. Follmer**, Vice President – Healthcare Properties  
Lic. #BS.0018023

820 Rancho Lane, Suite 85, Las Vegas, NV 89106  
P: 702-383-3033 | F: 702-383-8576  
[www.cornerstonecre.com](http://www.cornerstonecre.com)

Disclaimer: The information above has been obtained from sources believed reliable. While we do not doubt its accuracy, we have not verified it and make no guarantee, warranty or representation about it. It is your responsibility to independently confirm its accuracy and completeness. Any projections, opinions, assumptions or estimates used are for example only and do not represent the current or future performance of the property. The value of this transaction to you depends on tax and other factors which should be evaluated by your tax, financial and legal advisors. You and your advisors should conduct a careful, independent investigation of the property to determine for your satisfaction the suitability of the property for your needs. This information has been prepared exclusively for the clients of Cornerstone Company and is confidential. It is the property of Cornerstone Company, and reproduction of any portion without the written consent of Cornerstone Company is strictly prohibited.



## PROPERTY DESCRIPTION

Tenaya Health and Professional Building is a 20,965 square foot 2-story medical/office complex located at 2701 N. Tenaya Way in the Northwest Las Vegas Medical District. Located within two blocks of MountainView Hospital with great freeway access to US 95 at both Cheyenne Avenue and Lake Mead Boulevard.



# CORNERSTONE

COMMERCIAL REAL ESTATE SERVICES

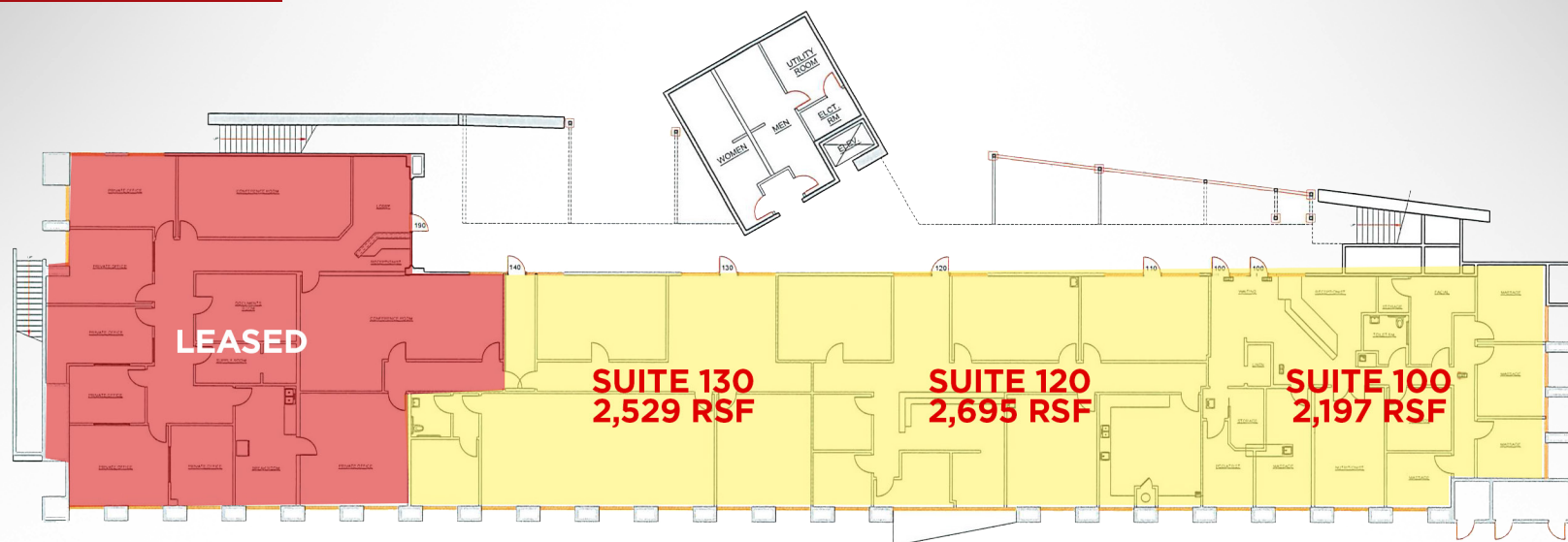
**Bruce S. Follmer**, Vice President – Healthcare Properties  
Lic. #BS.0018023

820 Rancho Lane, Suite 85, Las Vegas, NV 89106  
P: 702-383-3033 | F: 702-383-8576  
[www.cornerstonecre.com](http://www.cornerstonecre.com)

Disclaimer: The information above has been obtained from sources believed reliable. While we do not doubt its accuracy, we have not verified it and make no guarantee, warranty or representation about it. It is your responsibility to independently confirm its accuracy and completeness. Any projections, opinions, assumptions or estimates used are for example only and do not represent the current or future performance of the property. The value of this transaction to you depends on tax and other factors which should be evaluated by your tax, financial and legal advisors. You and your advisors should conduct a careful, independent investigation of the property to determine for your satisfaction the suitability of the property for your needs. This information has been prepared exclusively for the clients of Cornerstone Company and is confidential. It is the property of Cornerstone Company, and reproduction of any portion without the written consent of Cornerstone Company is strictly prohibited.

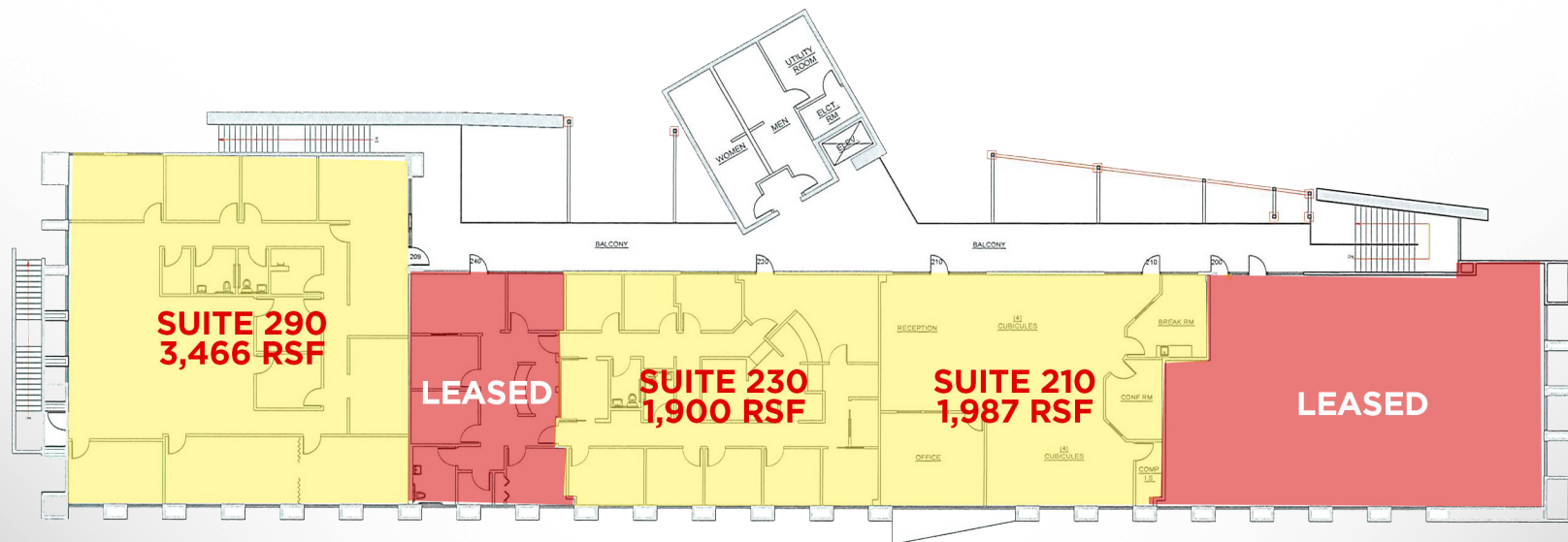


# FLOOR PLAN

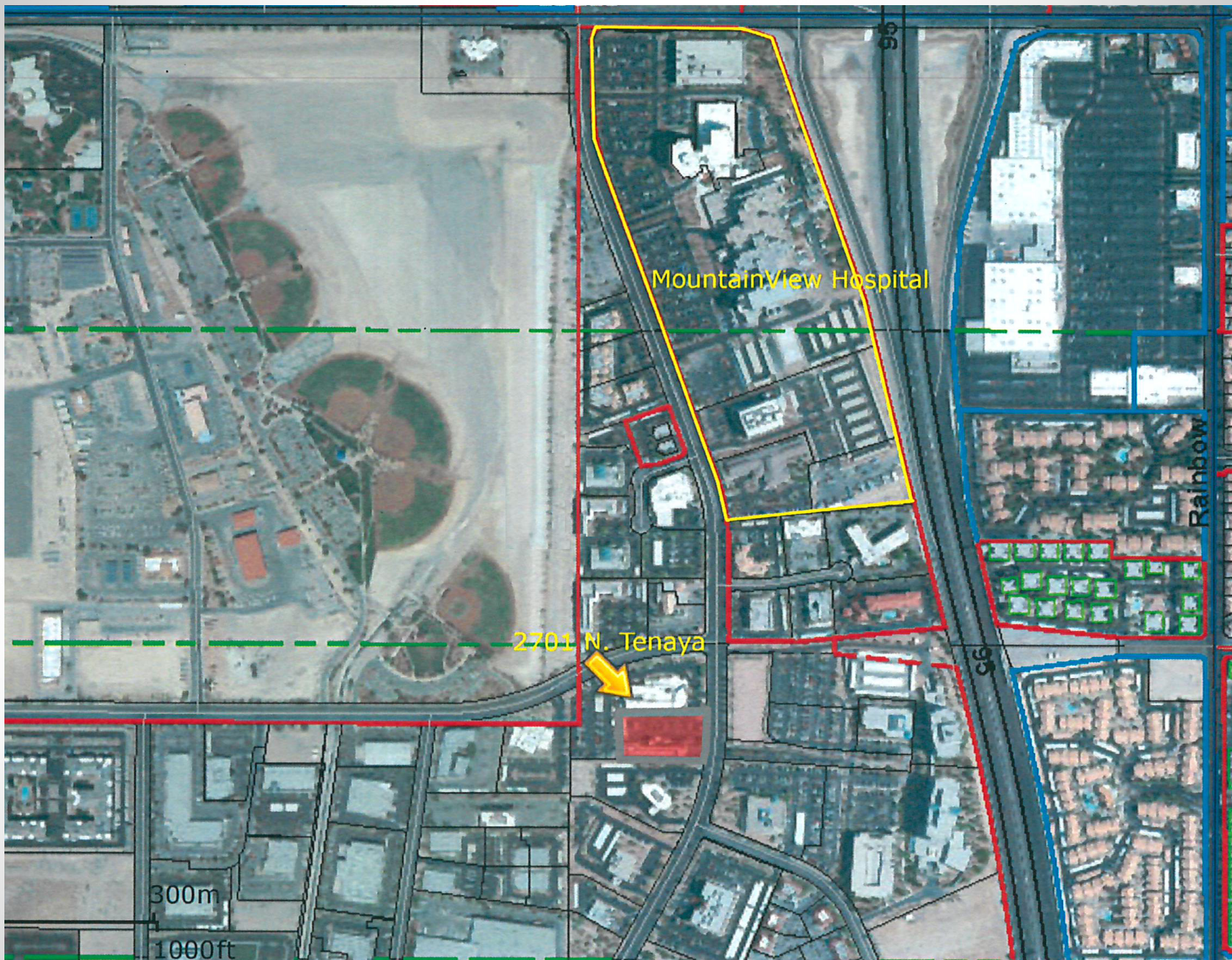


FIRST FLOOR PLAN (EXISTING)

SCALE: 1/8" = 1'-0"







Disclaimer: The information above has been obtained from sources believed reliable. While we do not doubt its accuracy, we have not verified it and make no guarantee, warranty or representation about it. It is your responsibility to independently confirm its accuracy and completeness. Any projections, opinions, assumptions or estimates used are for example only and do not represent the current or future performance of the property. The value of this transaction to you depends on tax and other factors which should be evaluated by your tax, financial and legal advisors. You and your advisors should conduct a careful, independent investigation of the property to determine for your satisfaction the suitability of the property for your needs. This information has been prepared exclusively for the clients of Cornerstone Company and is confidential. It is the property of Cornerstone Company, and reproduction of any portion without the written consent of Cornerstone Company is strictly prohibited.