

Washington & Morning Sun

Southeast Corner of E. Washington Avenue and Morning Sun Way, Las Vegas, Nevada

PROPERTY DETAILS

Great custom home lot on Sunrise Mountain with fabulous view of the City.

ASSESSOR'S PARCEL NUMBER:	140-26-310-064
PROPERTY SIZE:	.46 +/- Acres
ASKING PRICE:	\$165,000.00
TERMS:	Negotiable
CURRENT ZONING:	RE-Rural Estates Residential (2 units per acre)
FRONTAGE:	175 +/- feet on Washington Avenue 75 +/- feet on Morning Sun
TOPOGRAPHY:	Generally flat and level. Slight elevation change from west (low) to east (high)
IMPROVEMENTS:	Curb, gutter, sidewalk and street light on Washington Avenue



CORNERSTONE

COMMERCIAL REAL ESTATE SERVICES

Bruce S. Follmer, Vice President – Healthcare Properties
Lic. #BS.0018023

820 Rancho Lane, Suite 85, Las Vegas, NV 89106
P: 702-383-3033 | F: 702-383-8576
www.cornerstonecre.com

Disclaimer: The information above has been obtained from sources believed reliable. While we do not doubt its accuracy, we have not verified it and make no guarantee, warranty or representation about it. It is your responsibility to independently confirm its accuracy and completeness. Any projections, opinions, assumptions or estimates used are for example only and do not represent the current or future performance of the property. The value of this transaction to you depends on tax and other factors which should be evaluated by your tax, financial and legal advisors. You and your advisors should conduct a careful, independent investigation of the property to determine for your satisfaction the suitability of the property for your needs. This information has been prepared exclusively for the clients of Cornerstone Company and is confidential. It is the property of Cornerstone Company, and reproduction of any portion without the written consent of Cornerstone Company is strictly prohibited.

LOCATION



Disclaimer: The information above has been obtained from sources believed reliable. While we do not doubt its accuracy, we have not verified it and make no guarantee, warranty or representation about it. It is your responsibility to independently confirm its accuracy and completeness. Any projections, opinions, assumptions or estimates used are for example only and do not represent the current or future performance of the property. The value of this transaction to you depends on tax and other factors which should be evaluated by your tax, financial and legal advisors. You and your advisors should conduct a careful, independent investigation of the property to determine for your satisfaction the suitability of the property for your needs. This information has been prepared exclusively for the clients of Cornerstone Company and is confidential. It is the property of Cornerstone Company, and reproduction of any portion without the written consent of Cornerstone Company is strictly prohibited.

SITE PLAN

NOTES

This map is for assessment use only and does NOT represent a survey.

No liability is assumed for the accuracy of the data delineated herein. Information on roads and other non-assessed parcels may be obtained from the Road Document Listing in the Assessor's Office.

This map is compiled from official records, including surveys and deeds, but only contains the information required for assessment. See the recorded documents for more detailed legal information.

USE THIS SCALE (FEET) WHEN MAP REDUCED FROM 11X17 ORIGINAL

ASSESSOR'S PARCELS - CLARK COUNTY, NV.
Briana Johnson - Assessor

MAP LEGEND

- PARCEL BOUNDARY
- SUB BOUNDARY
- PMLD BOUNDARY
- ROAD EASEMENT
- MATCH / LEADER LINE
- HISTORIC LOT LINE
- HISTORIC SUB BOUNDARY
- HISTORIC PMLD BOUNDARY
- SECTION LINE
- CONDOMINIUM UNIT
- AIR SPACE PCL
- RIGHT OF WAY PCL
- SUB-SURFACE PCL
- 001 ROAD PARCEL NUMBER
- 001 PARCEL NUMBER
- 1.00 ACREAGE
- 202 PARCEL SUB/SEQ NUMBER
- PB 24.45 PLAT RECORDING NUMBER
- 5 BLOCK NUMBER
- 5 LOT NUMBER
- GLS GOV. LOT NUMBER

T20S R62E

124	123	12212
139	140	14114
162	161	16015

Scale: 1" = 200'

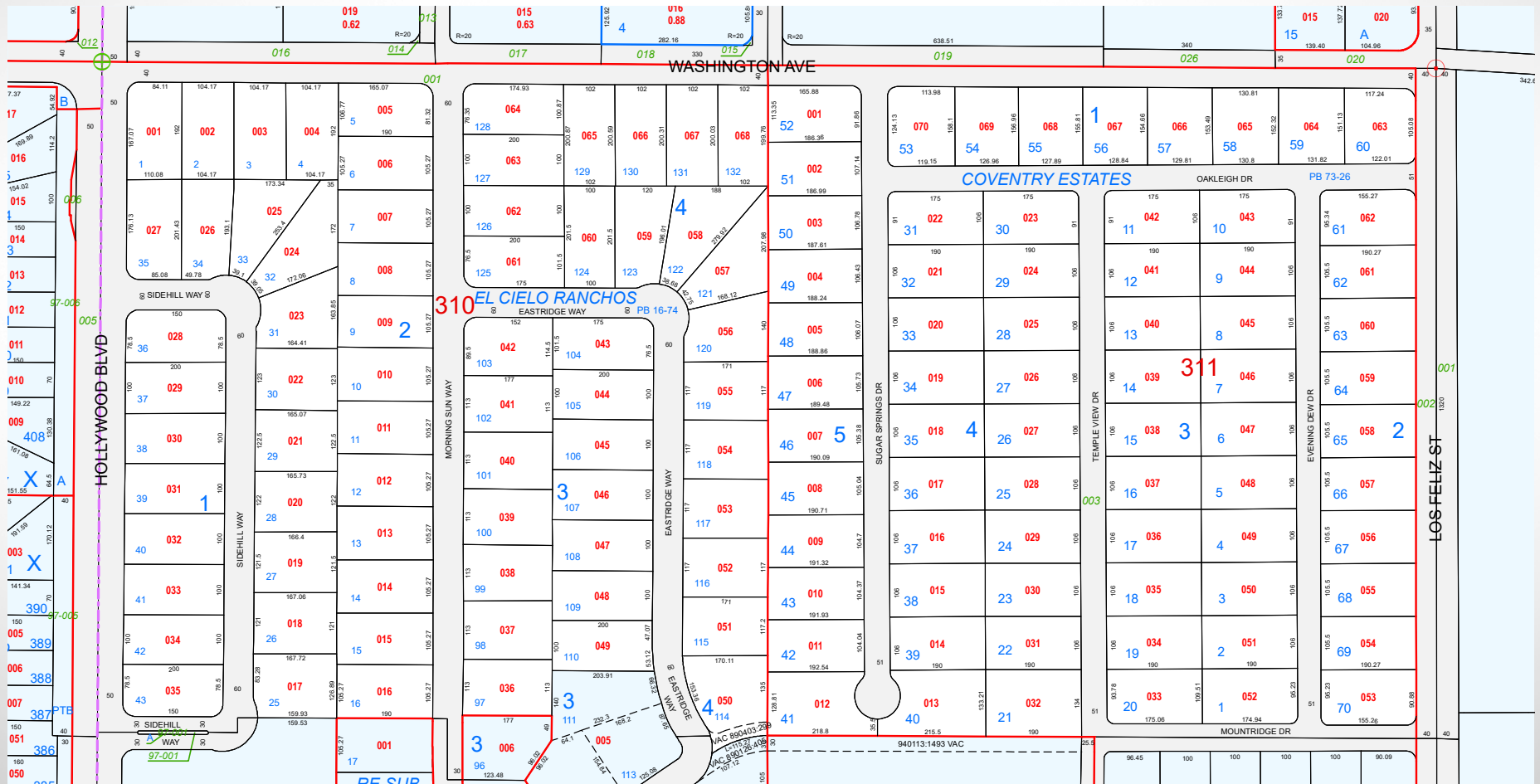
Rev: 1/8/2019

26

N 2 SW 4

8	4	8	4
5	1	5	1
6	2	6	2
7	3	7	3
8	4	8	4
5	1	5	1

140-26-3



TAX DIST 340